

The Jack

WiredScore Fact Sheet



Building address

**The Jack, 74 South Jackson Street,
Seattle, Washington, 98104, United
States**

The Jack is a WiredScore Platinum building





Being a WiredScore Platinum building means that The Jack can support occupiers with the most stringent technology requirements. The building has been designed as best-in-class across all features of connectivity that matter most to occupiers: number and quality of internet service providers; diversity and resiliency of telecommunications and power infrastructure; wireless network infrastructure; ease of installation and capacity to readily support new telecommunications services.



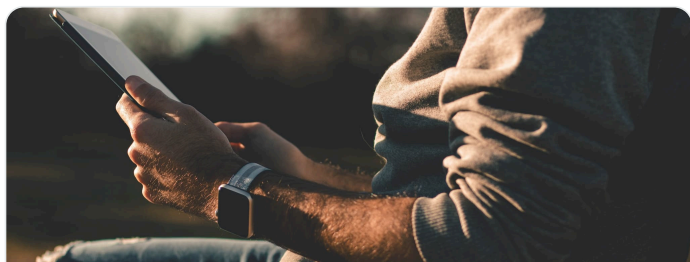
WiredScore
PLATINUM

1 of 4 WiredScore Platinum buildings in Seattle

An overview of the experience at The Jack

Category	Your experience at The Jack	Regular building experience
 Mobile and Internet	Enjoy unparalleled digital connectivity with top-tier internet providers and superior mobile performance, powered by robust fiber infrastructure for the ultimate online experience throughout the building.	Expect frustrating interruptions and dead zones as you move throughout the building due to patchy digital connectivity.
 Set-up	Enjoy seamless and effortless internet setup with multiple high-speed providers at your fingertips with streamlined legal contracting. Ensuring you easily find the perfect match for your needs and enjoy a smooth, hassle-free digital experience.	Experience a tedious and slow process to setup your internet connection.
 Future-ready	To meet your needs well into the future, the building is equipped with ample spare capacity throughout, including the risers, points of entry and telecommunications rooms. This ensures the building can accommodate new and emerging technologies, providing you with the flexibility and adaptability you require.	Risk future problems arising from an internet connection and mobile connectivity that can't keep up with your growing needs.
 Resiliency	The building's robust infrastructure, including multiple entry points and diverse and secure risers and telecommunications rooms, mitigates against almost all risks to uninterrupted connectivity.	Experience frequent productivity loss and general frustration resulting from your vulnerable, and poorly secured internet infrastructure.

Connected building highlights at The Jack



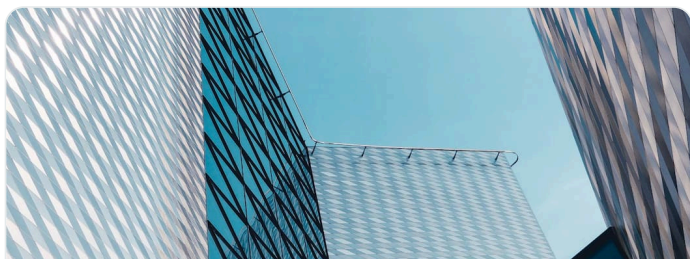
Mobile and Internet

- Exercise the power of choice with three high-speed providers to choose from.
- Free Wi-Fi in amenity areas allows you to be connected throughout the building.
- Easily install fixed wireless, satellite and mobile equipment with dedicated space and cable pathways to risers on the rooftop.



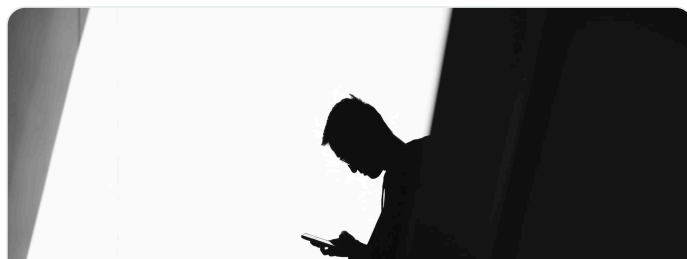
Set-up

- Easier service installation enabled by spare capacity within the below-ground telecommunications cable pathway.
- Capacity available throughout risers
- Secure access to risers on each floor prevents unauthorized access and accelerates the installation of connectivity services.
- Dedicated cable pathways ensure best practices are followed when installing telecommunications equipment.
- Protected routing enabled by a top-to-bottom riser with no offsets expedites the installation process.



Future-ready

- A dedicated fiber backbone eases telecommunications installations.
- Standardized access agreements provide you with transparency when onboarding new service providers.
- New internet service providers can be installed quickly with available space in the telecommunications room.
- Connect seamlessly to service providers via a universal communications chamber located near the property line.
- Abundant electrical capacity in the telecommunications room ensures your future needs are met.



Resiliency

- Your connection is safeguarded as the telecommunications rooms are protected by secure access controls.
- Physically diverse routes for your internet connection on different sides of the building means your connectivity is robust.
- Enjoy reliable connectivity thanks to diverse riser routing throughout the building.
- Robust diverse power sources protect your telecommunications equipment from outages.
- Connectivity infrastructure in the telecommunications room is protected from flooding.

What is WiredScore?

WiredScore certification is the global standard for digital connectivity, recognizing and promoting best-in-class digitally connected buildings across the globe. Being certified by WiredScore demonstrates the building has gone through rigorous 3rd party verification.

4000+

certified buildings

8m+

people in WiredScore
certified buildings

800m+

certified square feet

160+

cities across the globe